

Easyflex Cup Spring Mounts are specially designed to isolate mechanical equipment where both high and low-frequency vibration control is required. These mounts incorporate a laterally stable spring encased in a neoprene acoustical cup, ensuring superior performance in environments where noise sensitivity and system stability are critical. They are particularly suited for equipment installations adjacent to quiet zones, such as offices, studios, and residential areas.

## Key Features

- **Integrated Neoprene Acoustical Cup:** Encapsulates the spring for enhanced high-frequency noise attenuation and mechanical stability.
- **Color-Coded Springs:** Easy identification of load capacity during selection and installation.
- **Plated Leveling Bolt:** Height adjustability and secure locking to suit uneven surfaces.
- **Non-Skid Base:** Pre-fitted with anti-vibration neoprene pads for secure mounting.
- **Overload Protection:** Springs designed with 50% overload capacity.
- **Compliance:** All springs conform to BS 1726 (Part 1) and design guidelines from ASHRAE and SAE.

## Applications

Cup Spring Mounts are highly effective for isolating noise and vibration in the following types of equipment:

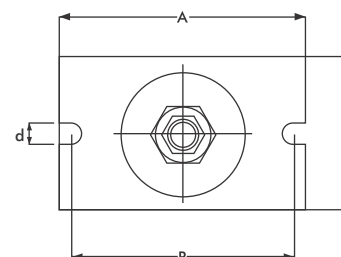
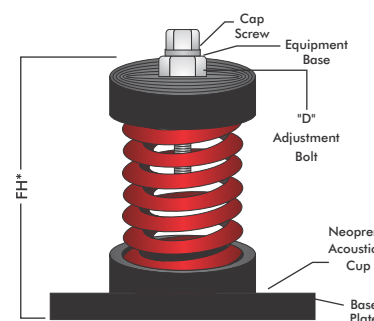
- Reciprocating refrigeration compressors
- HVAC air handling units and packaged rooftop systems
- Centrifugal and axial fans
- Inertia bases
- Base-mounted pumps
- Internal combustion engines
- Sound-sensitive environments such as studios, labs, and hospitals



## Installation Guidance

- Ensure evenly distributed loads across all mounts used.
- Place mounts directly under manufacturer-recommended support points.
- Securely anchor using bolt-through holes in the base plate where necessary.
- Avoid overloading; follow the rated load and deflection chart.

MODEL	COLOR CODE	RATED LOAD (lbs)	Def. (inch)	A (inch)	B (inch)	R (inch)	FH* (inch)	D	d
EFCUS 25-30	YELLOW	66	1	4.41	2.99	3.62	4.57	M-16	M-8
EFCUS 25-60	BLUE	132	1	4.41	2.99	3.62	4.57	M-16	M-8
EFCUS 25-100	GREEN	220	1	4.41	2.99	3.62	4.57	M-16	M-8
EFCUS 25-160	ORANGE	352	1	4.41	2.99	3.62	4.57	M-16	M-8
EFCUS 25-200	RED	440	1	4.41	2.99	3.62	4.57	M-16	M-8
EFCUS 25-250	PURPLE	550	1	4.41	2.99	3.62	4.57	M-16	M-8
EFCUS 25-300	GREY	660	1	5.51	3.94	4.53	5.91	M-18	M-12
EFCUS 25-400	ORANGE	880	1	5.51	3.94	4.53	5.91	M-18	M-12
EFCUS 25-500	BROWN	1100	1	5.51	3.94	4.53	5.91	M-18	M-12
EFCUS 25-600	BLACK	1320	1	5.51	3.94	4.53	5.91	M-18	M-12
EFCUS 25-800	RED	1760	1	5.51	3.94	4.53	5.91	M-18	M-12
EFCUS 25-1050	WHITE	2310	1	5.51	3.94	4.53	5.91	M-18	M-12
EFCUS 25-1250	GREEN	2750	1	5.51	3.94	4.53	5.91	M-18	M-12



**Compliance - Springs designed according to BS 1726 (Part 1) and recommendations made by SAE (US) and ASHRAE**

Easyflex Cup Spring Mounts are specially designed to isolate mechanical equipment where both high and low-frequency vibration control is required. These mounts incorporate a laterally stable spring encased in a neoprene acoustical cup, ensuring superior performance in environments where noise sensitivity and system stability are critical. They are particularly suited for equipment installations adjacent to quiet zones, such as offices, studios, and residential areas.

### Key Features

- **Integrated Neoprene Acoustical Cup:** Encapsulates the spring for enhanced high-frequency noise attenuation and mechanical stability.
- **Color-Coded Springs:** Easy identification of load capacity during selection and installation.
- **Plated Leveling Bolt:** Height adjustability and secure locking to suit uneven surfaces.
- **Non-Skid Base:** Pre-fitted with anti-vibration neoprene pads for secure mounting.
- **Overload Protection:** Springs designed with 50% overload capacity.
- **Compliance:** All springs conform to BS 1726 (Part 1) and design guidelines from ASHRAE and SAE.

### Applications

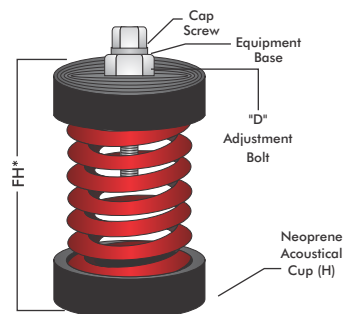
Cup Spring Mounts are highly effective for isolating noise and vibration in the following types of equipment:

- Reciprocating refrigeration compressors
- HVAC air handling units and packaged rooftop systems
- Centrifugal and axial fans
- Inertia bases
- Base-mounted pumps
- Internal combustion engines
- Sound-sensitive environments such as studios, labs, and hospitals

### Installation Guidance

- Ensure evenly distributed loads across all mounts used.
- Place mounts directly under manufacturer-recommended support points.
- Securely anchor using bolt-through holes in the base plate where necessary.
- Avoid overloading; follow the rated load and deflection chart.

MODEL	COLOR CODE	RATED LOAD (lbs)	DEF. (inch)	FH* (inch)	D	H (inch)
EFCUSA 25-30	YELLOW	66	1	4.65	M16	2.68
EFCUSA 25-60	BLUE	132	1	4.65	M16	2.68
EFCUSA 25-100	GREEN	220	1	4.65	M16	2.68
EFCUSA 25-160	ORANGE	352	1	4.65	M16	2.68
EFCUSA 25-200	RED	440	1	4.65	M16	2.68
EFCUSA 25-250	PURPLE	550	1	4.65	M16	2.68
EFCUSA 25-300	GREY	660	1	5.59	M18	3.54
EFCUSA 25-400	ORANGE	880	1	5.59	M18	3.54
EFCUSA 25-500	BROWN	1100	1	5.59	M18	3.54
EFCUSA 25-600	BLACK	1320	1	5.59	M18	3.54
EFCUSA 25-800	RED	1760	1	5.59	M18	3.54
EFCUSA 25-1050	WHITE	2310	1	5.59	M18	3.54
EFCUSA 25-1250	GREEN	2750	1	5.59	M18	3.54



### Compliance - Springs designed according to BS 1726 (Part 1) and recommendations made by SAE (US) and ASHRAE

- Due to policy of continual improvement, the specifications are subject to change without prior notice.
- Measurements are subject to 5% tolerance.
- To achieve good sound suppression do not over load fitting.